

cancerexecutives.org



Cancer Rehabilitation: Redefining “Successful” Cancer Care

By *Leslie J. Waltke, PT*
Cancer Rehabilitation Coordinator, Aurora Health Care
Founder and Lead Faculty, R3 Programs

For the last decades in oncology we have rightfully been focused on eradicating disease, slowing disease progression and increasing length of life. And according to the American Cancer Society we have been quite successful. Combined five-year survival rates have increased from 50% in 1975 to nearly 67% in 2011.

But when the NCCN reports that when we treat people for cancer, up to 90% of them experience fatigue, pain, weakness and/or functional problems that can continue for months and years; do we need to reassess and challenge what we label “successful”?

As with many orthopedic injuries and surgeries, cardiac, neurological and chronic diseases, rehabilitation (physical, occupational, speech therapy and audiology) is a standard and key component in treatment and in achieving successful outcomes. With cancer surgery, chemotherapy, radiation, hormonal

and biological therapies causing well documented musculoskeletal, cardiopulmonary and functional problems, it is unfortunate that rehabilitation is not more frequently an automatic component of cancer care.

“It is unfortunate that rehabilitation is not more frequently an automatic component of cancer care.”

There is a significant amount of evidence in the literature proving the benefits of rehabilitation including decreased fatigue, pain and weakness during cancer treatment and faster physical recovery upon conclusion. Rehabilitation can decrease the risk of long term and late side effects, including lymphedema. There is even data showing that breast and colon cancer survivors on a walking program can reduce their risk of recurrence.

When a rehabilitation therapist is involved in patient care, oncology physicians appreciate improved interdisciplinary communication, decreased patient complaints, improved

Continued on page 4 >

ACE Calendar



18th Annual Meeting
JAN. 18–21, 2012
SAVANNAH, GA
HYATT REGENCY SAVANNAH

19th Annual Meeting
JAN. 23–26, 2013
SAN ANTONIO, TX
GRAND HYATT SAN ANTONIO

President’s Message

William Laffey
System Director, Cancer Services
Aurora Health Care



As you probably know, January was named for the Roman god, Janus, who looked both forward and backward. ACE and its membership did the same thing at our annual meeting in New Orleans last January. In addition to acknowledging and thanking our outgoing board members (**Pat Grusenmeyer, Nancy Harris and Jeanne Rogers**), we welcomed new board members **Peggy Carey, Dave Gosky and Teresa Heckel**. Contact information for our new members, as well as our continuing members, is on the ACE website. Please let us know your thoughts, ideas and concerns. You’ll also find a list of our committees and their responsibilities. We invite all members to participate on a committee of your choice. If you have a special interest, contact the committee chair and get involved!

This year, we have established a short term work group, chaired by **Wendy Austin**, to explore in depth the concept of credentialing of cancer executives and make a recommendation to the board later this year. The response from our membership for participation on this important work team was overwhelming!! Over thirty-five members initially signed up to allow their opinions, both positive and negative, to be heard. You will hear much more about this topic over the upcoming months.

As we continue to look forward, mark your calendars now for the 2012 ACE annual meeting in Savannah, on . With **Linda Ferris** as chair, the Education Committee is planning a terrific program to assist all of us in hearing about best practices, technological advances, and organizational improvements to allow us to provide exceptional quality and unforgettable service to the patients and communities we serve.

Finally, a reminder to contact the board with any issues you’d like the organization to address or ideas you’d like considered. Thanks to each of you for your active participation in ACE! ■

JW FRIDAY, HOOKER **ASSOCIATES**

Oncology Recruiting Solutions

JW Friday, Hooker & Associates is an experienced **Healthcare Executive Search Firm** that specializes within the oncology service line. We excel in providing exceptional candidates that will make an immediate impact to our client's healthcare organization by providing our clients with the most **experienced and recognized recruiters** within oncology today. Our firm's creativity and ability to offer key industry knowledge within oncology enables us to have a more consultative approach in offering solutions to healthcare organizations and is why we have been able to work with some of the top cancer programs in the nation. We truly understand the complexity of the oncology service line and the daily challenges that hospitals and administrators face within this specialty.

Here are just a few benefits of working with our firm:

- Recruitment & retention of key oncology professionals - permanent & transitional leadership
- 95% candidate placement retention rate
- Confidential candidate representation
- Delivery guarantee of candidates within 30 days from start of search
- Candidate exclusivity for our clients
- 1 year employment guarantee

We are a retained firm and believe in partnering with our clients to customize a search process that will allow us to surface exceptional candidates in a guaranteed time frame.

Positions we have experience in recruiting on within the specialty of oncology include:

Multi System/Corporate Oncology Service Line Director, VP of Oncology Services, Oncology Service Line Director, Cancer Center Administrator/Director, Clinical Oncology Director/Manager, Radiation Oncology Director/Manager, Bone Marrow Transplant Director/Manager, Nurse Practitioner, Physician Assistant, Clinical Nurse Specialist, Oncology Research Director/Manager, Patient Navigator and Stem Cell Manger

For more information about our services please contact us.

JULIA E. WILLIAMS

CEO/Oncology Recruitment Specialist
juliawilliams@jwfriday.com

WINSTON T. HOOKER

Vice President/Oncology Recruitment Specialist
winston@jwfriday.com

1126 Patricia Drive
Bossier City, Louisiana 71112
318.747.5858
www.jwfriday.com



The most underrated tool in the treatment of cancer

THE FIRST DIGITAL LINAC • THE FIRST CONE BEAM CT • THE FIRST 4D IMAGE GUIDANCE •
THE FIRST FILMLESS AND PAPERLESS DATA MANAGEMENT • THE FIRST OPEN SYSTEM



It's the difference between treat and care

Listening. It's made all the difference in how people think about us and how we think about our next innovations. By doing more listening than talking and through collaboration with our customers worldwide, Elekta produces many clinically relevant firsts that continue to define and raise the standard of human care. You certainly can hear a lot just by listening. Visit us at elekta.com/experience.

Experience the Elekta Difference



ELEKTA

Cancer Rehabilitation

> Continued from page 1

chemotherapy delivery rates, fewer infections, fewer falls and decreased length of inpatient stays. Hospitals and clinics report increased patient satisfaction, better transitions between inpatient and outpatient care as well as between surgery, radiation and chemotherapy. With rehabilitation being grossly underutilized in cancer care, it can be a significant source of increased revenue. And now that most health care systems are on a level playing field with diagnostics and equipment, a strong cancer rehabilitation program can set a facility apart from its competitors.

The largest barrier to cancer rehabilitation program development is a lack of education and understanding in both rehabilitation and oncology practitioners. Oncology and rehabilitation are not an automatic association in healthcare and most universities and medical schools don't address it in their curriculums. As a result there are two important medical pieces under the same roof that don't know what the other does. However, with meetings and education expanding paradigms of the medical, nursing, administrative and therapy staffs, cancer rehabilitation programs are quite simple to develop since personnel and equipment are already in place.

Since many of the physical problems faced during cancer treatment are treatable or preventable with rehabilitation, survivorship is too late to start

addressing these issues. Cancer rehabilitation best practice is best achieved when patients are referred shortly after the onset of cancer treatment and are followed by a rehabilitation professional throughout their months long treatment and into survivorship.

If we are going to attempt to cure people of cancer, we need to make it worth it. Let's progress our definition of successful cancer treatment to eradicating or slowing disease progression as well as returning or maximizing comfort and activity levels. I think our patients would insist. ■



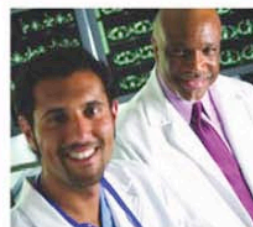
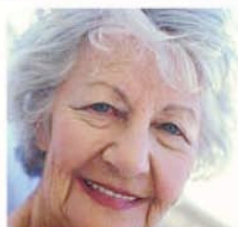
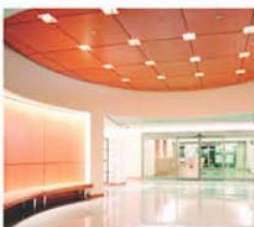
Leslie J. Waltke, PT, is the Cancer rehabilitation Coordinator for Aurora Health Care and Founder and Lead Faculty of R3 Programs. She welcomes questions, comments and consulting inquiries at Leslie.Waltke@att.net or at (414) 322-8033

By 2020, demand for cancer care services will increase by 36%*. Are **YOU** ready?

The market potential in cancer care is great, but so is the risk and complexity of successful program development. Trust the company that can deliver the expertise and experience to help you develop a market-leading cancer program, or enhance an existing one - Aptium Oncology.

- Flexible and scalable program
- Customized to your facility and community
- Builds your competitive edge
- Drives your clinical, operational and financial performance

Talk to us at 877-278-4862 or log on to www.aptiumoncology.com



* Sg2 forecast



ACE Member {Get-A-Member} Campaign Starts Now!

Refer a **NEW** ACE Member to attend the ACE Annual Meeting and get a reward!

- Referral deadline is **OCTOBER 31, 2011**
- Successful referrals will receive a \$25 AmEx gift card*
- Rules for receiving gift card:
 - Name must appear on new member online application
 - Dues must be current; referral must be registered and in attendance at ACE's 18th Annual Meeting in Savannah
 - Claim your gift card at the Annual Business Meeting during the ACE 18th Annual Meeting in Savannah

JANUARY 18-21, 2012
Savannah, Georgia
HYATT REGENCY SAVANNAH

*One gift card per referral. No limit on how many cards one person can receive. Please contact ACE HQ with any questions.

(202) 521-1886 | Fax: (202) 833-3636 | Email: info@cancerexecutives.org | www.cancerexecutives.org
1025 Thomas Jefferson Street, NW | Suite 500 East | Washington, DC 20007

THE ONCOLOGY GROUP



GROW... EXPAND... ENHANCE... BUILD...
YOUR CANCER PROGRAM AND OPERATIONS

OUR CONSULTANTS WORK WITH YOUR ONCOLOGY PROGRAMS AND STAFF TO INTEGRATE SERVICES AND PRODUCE A 21ST CENTURY CANCER CARE EXPERIENCE.

CALL US TODAY TO SPEAK WITH ONE OF OUR EXPERT ONCOLOGY CONSULTANTS.
PH: 512.583.8815

WWW.THEONCOLOGYGROUP.COM
1817 W. BRAKER LANE, BUILDING F, SUITE 200 | AUSTIN, TX 78758



Oncology Management Consulting Group to establish Cancer Personnel Recruitment Division. Clayton "Dunk" Pruett to lead.

Recognizing that a significant element to the coming crisis in the national healthcare scene will be the need for substantial numbers of qualified individuals to fill the large number of cancer related vacancies in hospitals and medical practices, Oncology Management Consulting Group (OMC Group) of Pipersville, PA has established a separate operating Recruitment Division to offer recruitment services to our clients.

As a part of this new organizational component, OMC Group is pleased to announce the addition of Clayton "Dunk" Pruett to its leadership team. He will serve as OMC Group's Vice-President of the OMC Recruiting Division and will direct this newest program for OMC Group. A highly respected and recognized expert in oncology consulting, Dunk Pruett is proficient in business and program consulting in addition to planning, developing, and implementation of oncology programs for research and clinical services.

"This was an easy decision for us" says Teri U. Guidi, President and CEO of OMC Group. "There are very few giants in our industry and Dunk Pruett certainly leads that group. As a former principal and co-owner of Oncology Solutions in GA, former CEO of CDP Services and founder of a number of other highly successful cancer related companies, Dunk brings an unsurpassed level of oncology knowledge, 30 years of distinguished consulting and management expertise and a vast network of cancer professionals and clients to the table!"

"This is the perfect time in my career to make a positive change like this and offers me the opportunity to use my industry knowledge and contacts for the recruitment of qualified individuals to fill key vacancies." Dunk Pruett responds. "OMC Group enjoys an extraordinary reputation not just for their consulting expertise but also for honesty, integrity and true professionalism. Their current team is noteworthy and truly the finest in the business. I look forward to leading this newest operating division to success for OMC Group and its clients and to making a significant contribution to what promises to be an exciting future of growth for OMC Group."

Assisting hospitals, health systems, physician practices and pharma, Oncology Management Consulting Group offers the most comprehensive line of consulting services in the industry. Our oncology specialists remain on the cutting edge with assistance that includes: hospital/physician integration, facility planning, cancer center development, detailed revenue cycle reviews, program and practice assessments, strategic planning, business planning and more. Truly customized services that precisely address client needs and challenges - genuine and notable oncology experts - and unmatched customer service --- all combine to establish OMC Group as the premier consulting firm exclusively assisting oncology providers across the US. For more information, please call 215.766.1280.

ACE Welcome New Members

Since January 30, 2011

■ **Daniel Chang**
Architect, President
AE Design Inc.
 2130 Kingston Court
 Suite E
 Marietta, GA 30067
 770-644-9200
 daniel@ae-design.com

■ **Nick Erikson**
*Project Manager, Comprehensive
 Cancer Center at Exempla Saint
 Joseph Hospital*
Insight Oncology, Inc.
 1825 Marion St.
 Denver, CO 80218
 303-318-1316
 nickerikson@insightonc.com

■ **Judy Fisher, RN**
Director, Community Health Resource
Norton Cancer Institute
 Suburban Medical Plaza I, Suite 3C
 4001 Dutchmans Lane
 Louisville, KY 40207
 502-899-6867
 judy.fisher@nortonhealthcare.org

■ **Spencer Green**
Business Operations Manager
**Bozeman Deaconess Cancer
 Center**
 931 Highland Blvd., suite 3130
 Bozeman, MT 59718
 406-522-1617
 green0032@yahoo.com

■ **Toni Hare, RHIT, CTR**
Vice President
CHAMPS Oncology
 1226 Huron Rd East
 Cleveland, OH 44115
 216-255-3716
 toni.hare@chanet.org

■ **Laura Holasek**
Administrative Director
**Park Nicollet Frauenshuh Cancer
 Center**
 3931 Louisiana Ave So.
 St. Louis Park, MN 55426
 352-993-5732
 Laura.Holasek@parknicollet.com

■ **Jason Howard**
Manager, Physician Relations
Norton Cancer Institute
 315 E. Broadway, 4th Floor
 Louisville, KY 40202
 502-629-2992
 jason.howard@nortonhealthcare.org

■ **Kathleen LaRaia, OTR**
Vice President Oncology
St. John Providence Health System
 22201 Moross Suite 250
 Detroit, MI 48236
 313-343-4621
 kathleen.laraia@stjohn.org

■ **Rose Mueller**
**University of Pennsylvania Health
 System**
 512 Crown Street
 Willow Grove, PA 19090
 215-248-8948
 Mueller@uphs.upenn.edu

■ **John Randall**
UT MD Anderson Cancer Center
 1515 Holcombe Blvd.
 Unit 1354
 Houston, TX 77030
 713-563-0737
 jmrandall@mdanderson.org

■ **Andrea Schelin, RN, MSN**
Director, Oncology Services
Trinity Regional Health System
 2701 17th Street
 Rock Island, IL 61201
 309-779-5902
 schelial@trinityqc.com

■ **Natalie Schuren, RN, BSN, MSN**
*Department Administrator
 Palliative Care and Rehab. Medicine*
UT MD Anderson Cancer Center
 1515 Holcombe Boulevard, Unit 1414
 Houston, TX 77030
 713-792-6085
 nlschuren@mdanderson.org

■ **Jeffrey B. Silvers**
Alliance Oncology
 45 W. Honeysuckle Road
 Lake Forest, IL 60045
 847-615-8835
 jsilvers@allianceoncology.com

■ **Michael Stein, CMPE**
Director
**Alvin & Lois Lapidus Cancer
 Institute**
 2401 West Belvedere Avenue
 Baltimore, MD 21215
 410-601-8494
 mwstein@lifebridgehealth.org

■ **Rick Varterasian**
Director, Oncology Service Line
CaroMont Health
 2525 Court Drive
 Gastonia, NC 28054
 704-834-3544
 varterasianra@caromonthhealth.org

■ **Susan Woods, MBA, BSN, RN**
Director, Oncology Nursing Services
Spectrum Health
 145 Michigan St. NE, MC 120
 Grand Rapids, MI 49503
 616-486-5897
 sm.woods@gmail.com



CONFERENCE CALL

Topic: MULTIDISCIPLINARY CONFERENCES
Speaker: Mark Krasna
Wednesday, June 15, 2011 | 2:00PM EST
 45 min. Presentation + 15 min. Q&A

ACE Members are invited to participate in a **FREE one-hour conference call** featuring invited speakers to discuss a **"hot topic"** in the industry. We hope you find this ACE Member tool an exciting way to learn from your peers and experts in the field.



FOR ACE MEMBERS ONLY

REGISTRATION IS REQUIRED. Registration information will be sent to members soon.
QUESTIONS? Call ACE HQ at 202-521-1886 or email info@cancerexecutives.org

ACE 17TH ANNUAL MEETING EXHIBITORS

THANK YOU!

| | |
|--|--|
| ACCC | InfuSystem, Inc. |
| Accuray Incorporated | Integrated Healthcare Strategies |
| AE Design, Inc. | National Coalition of Oncology Nurse Navigators |
| Altos Solutions, Inc. | Oncology Management Consulting Group |
| American College of Surgeons Commission on Cancer | Oncology Services International |
| Aptium Oncology | Oncology Solutions |
| Bogardus Medical Systems Inc. | Philips Healthcare |
| Calypto Medical Technologies | Pyramid Healthcare Solutions |
| CHAMPS Oncology | Radiation Business Solutions |
| D3 Radiation Oncology Solutions | Robins & Morton |
| Elekta, Inc. | Siemens Healthcare |
| FKP Architects | The Oncology Business Institute (TOBI) |
| Forte Research Systems | The Oncology Group |
| GE Healthcare | Tomo Therapy, Inc. |
| Genentech | Varian Medical Systems |
| Healing Touch Program | |



ACE CORPORATE SPONSORS

PLATINUM



GOLD

d3 Radiation Oncology Solution
Forte Research Systems
GE Healthcare
Integrated Healthcare Strategies

SILVER

Accuray Incorporated
AE Design
Aptium Oncology
CHAMPS Oncology
FKP Architects
Genentech
JW Friday, Hooker & Associates
National Coalition of Oncology Nurse Navigators
The Oncology Group
Oncology Solutions
Oncology Management Consulting Group
Radiation Business Solutions
Siemens Healthcare

BRONZE

Nursnav Oncology | Philips Healthcare

LEHIGH VALLEY HEALTH NETWORK

There is a great deal of excitement around cancer care at Lehigh Valley Health Network (LVHN), and we are looking for a new leader to help drive our continued success. If you are an experienced and passionate cancer executive with proven skills in strategic planning, program development, marketing, operations management, staff development, medical staff relationships and financial oversight and you enjoy being part of a high-performing, progressive and financially stable organization, then you may be our new **Vice President for Cancer Services**.

LVHN was recently chosen to be one of only 30 cancer centers in the country to join the National Cancer Institute Community Cancer Center Program (NCCCP) which will bring new cancer treatment clinical trials to the Lehigh Valley. Due to our new academic affiliation with the University of South Florida, we are now working with the Moffitt Cancer Center to bring phase 2 trials to LVHN. Our program volumes continue to grow, registering 2,700 new analytic cases each year. We are accredited as Network Cancer Program by the American College of Surgeons' Commission on Cancer, received an Outstanding Program Achievement Award, and are accredited as an NAPBC comprehensive site.

A beautiful suburban area with a cosmopolitan flair, this eastern Pennsylvania location has a population of over 700,000. It offers excellent public schools, 10 colleges and universities, safe and affordable neighborhoods, and a plethora of recreational and cultural offerings. Enjoy easy access to Philadelphia, New York City and the shores of New Jersey, Maryland and Delaware

Email a cover letter and resume to Keith Weinhold, Sr VP, Operations, c/o tammy.jamison@LVH.com or call (610) 969-0211.

A PASSION FOR BETTER MEDICINE.™



LVHN.org

ACE Membership Dues Drive for 2011-2012 Begins July 1

Mark your calendar to renew your dues and continue receiving the benefits of ACE membership without interruption.

JOIN A COMMITTEE!

To learn more about ACE Standing Committees visit www.cancerexecutives.org or email: info@cancerexecutives.org

YOUR FEEDBACK IS IMPORTANT TO US!

ACE appreciates suggestions to better serve you. E-mail your questions or comments to: info@cancerexecutives.org

Share Your News

Announce it in *ACE Update* for the industry to see!
Send your news and press releases to:
info@cancerexecutives.org – attention *ACE Update*.

achievements
events
program change
staff honors
transitions
new facilities



ASSOCIATION
of CANCER
EXECUTIVES

1025 Thomas Jefferson Street NW
Suite 500 East | Washington DC 20007
202.521.1886 | Fax: 202.833.3636

ACE Update is published by Association of Cancer Executives (ACE) © 2010 ACE. All rights reserved.



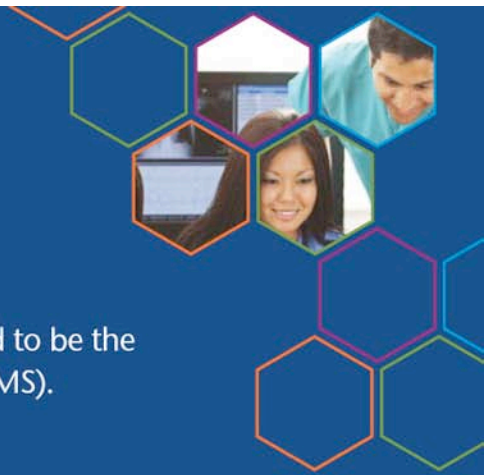
Easy-to-use, online, cloud-based CTMS

- With ten years of experience behind it, Allegro has been designed to be the most intuitive, easy-to-use clinical trials management system (CTMS).
- No software to install and no systems administration.
- Real-time visibility into your entire clinical research portfolio.
- Easy protocol and calendar setup with highly intuitive interfaces.
- Financial management tools for billing compliance and timely invoicing.
- Activity history, reporting tools, and dashboards for better monitoring visits and audits.
- From the people who created **OnCore**[®], the system used by 40% of NCI designated cancer centers that do clinical research.



Learn more about Allegro at
www.ForteResearch.com
(608) 826-6002
sales@ForteResearch.com

*PercipEnz Technologies is now Forte Research Systems.
Same company, new name.*





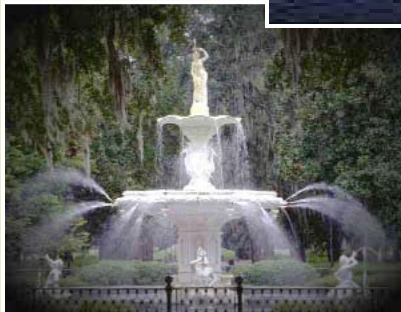
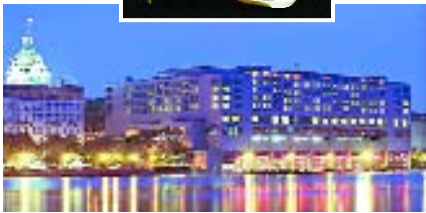
Join your colleagues in 2012

ASSOCIATION
of CANCER
EXECUTIVES

ACE 18TH ANNUAL MEETING



JANUARY 18-21, 2012
HYATT REGENCY SAVANNAH



SAVE THE DATE!



SAVANNAH, GEORGIA

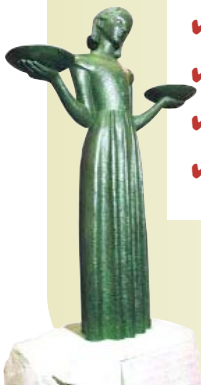


Come to Savannah in January and learn how to effectively steer your cancer center through today's emerging challenges. If you are an oncology administrator, this is the event that you do not want to miss.

- ✓ Educational sessions with expert speakers (Continuing Education Credits offered)
- ✓ Great networking opportunities
- ✓ Latest technologies and services in EXPO Hall
- ✓ Walk away with tools and strategies you can implement the moment you return

EXHIBITOR & SPONSORSHIP OPPORTUNITIES AVAILABLE!

For more information contact ACE at (202) 521-1886 info@cancerexecutives.org



Registration information coming soon! Stay tuned at www.cancerexecutives.org